

DIGITAL PROOFING RESOLVED

Why AbsoluteProof?

AbsoluteProof[®] is a digital proofing solution, built by the industry, for the industry - specifically designed to meet the challenging transition from analog/traditional to the modern all digital workflow.

Gimlé was founded in 1998 by a team of prepress professionals who experienced first-hand that true 'press match standard', digital proofing was a significant industry need not yet met by available inkjet proofing technologies.

After several years of hands-on research, development, and industrial strength field testing - AbsoluteProof[®] was delivered to the market in November 2000.

Digital Proofing Resolved.

Seeing is believing how AbsoluteProof can turn an ordinary printer into an affordable true digital halftone proofing machine.

AbsoluteProof[®] customers now have a simple alternative built on a familiar platform, Mac OS X, to make the profitable transition to the digital-in-digital-out workflow without disrupting their current production environment.

Acting as the color management server, AbsoluteProof ensures that every digital component - from scanner/digital camera (RGB) to final imagesetter/RIP production files (CMYK+) remain color matched and synchronized through proofing and on press.

- ✓ Handles various file formats including PDF, 1- & 8-bit TIFF, Composite or Separated PostScript
- ✓ Works with RGB, CMYK, Spot colors, Duotones, and HiFi/Specialcolor/Hexachrome
- ✓ Uses Custom or Standard ICC profiles and is ColorSync compatible
- ✓ Supports a range of print standards including SWOP, GraCOL, Fogra, etc.

Desktop "hot folders" enable a simple "drag-and-drop" interface to the output queue and can be quickly setup and customized for any combination of proofing requirements. Customers are able to automate and track specific client jobs and better manage their throughput and proofing device capabilities, saving hours of time and money.

See the Dots for Less.

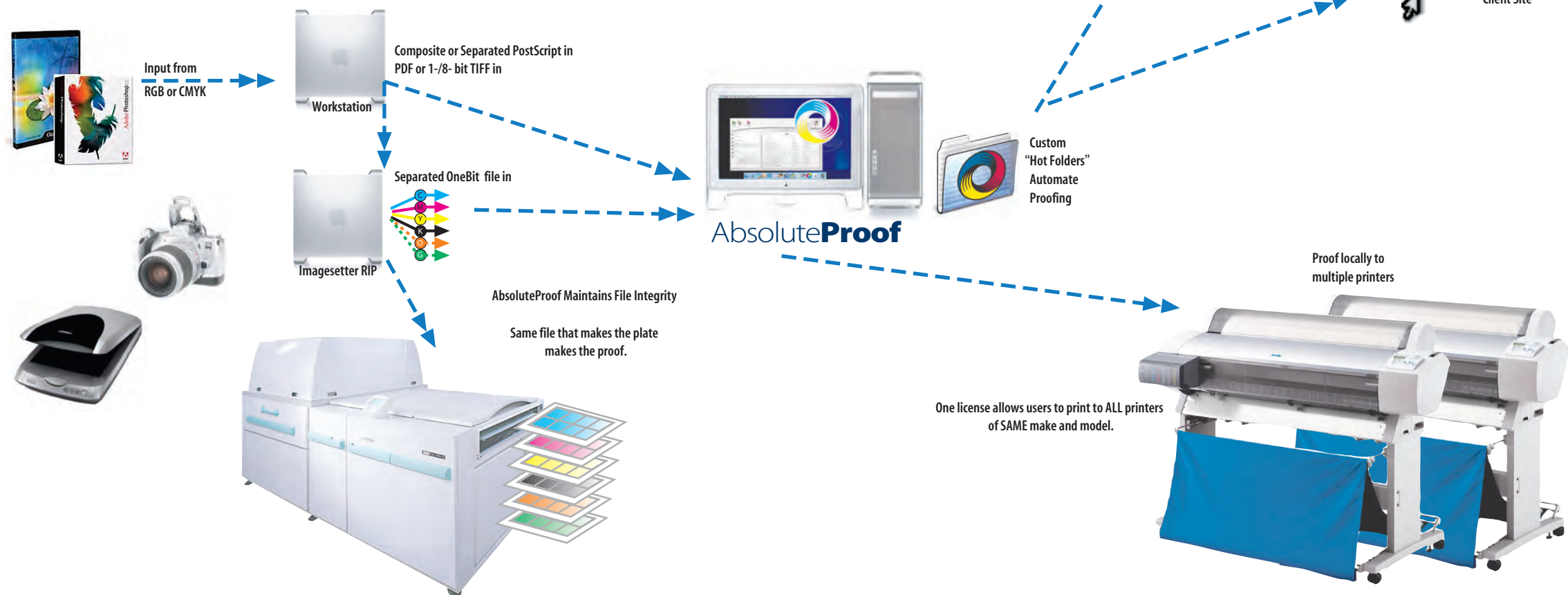
AbsoluteProof delivers sharp, accurate halftone dots and rosette patterns using the same files that make the final plates to let you predict press output with amazing dot quality and color accuracy making it the lowest priced dot proofing system available in the market today!

AbsoluteProof[®] takes the ripped files containing all relevant job data including; traps, overprints, fonts, and images and reproduces them exactly as your image or platesetter would directly to your inkjet. Job issues such as trapping or moiré (if they exist) are identified instantly and can be corrected before outputting the final film or plates.

Advanced users can take advantage of AbsoluteProof's PressMatch DotGain Control[®] to fine tune the dot gain control curves to current press conditions. This helps to compensate for changes in the press such as new blankets or other variables, which can affect the dot gain of the press.

Today's market is more accepting of contone proofs primarily because current available technology limited an ink jet's ability to properly reproduce the image/platesetter's output resolution. Why settle when AbsoluteProof's Intelligent Multicolor Engine technology uses advanced filtering to produce the halftone dot with minimal impact on the halftone screen.

Our customers are fully in control of their halftones. Advanced controls provide access to five different levels of fine tuning so the halftone can be set to reproduce as sharp or unsharp as they choose up to 200lpi (depending on the model inkjet used).



COLORMANAGEMENT MADE EASY

Want Remote Proofing?

All versions of AbsoluteProof include the ability to generate color match proofs remotely without the need for additional software in remote locations.

AbsoluteProof[®] supports remote proofing without the need for additional software at remote sites. AbsoluteProof[®] handles ICC color profile information behind the scenes, making it extremely effective in emulating target colors within the printer's output color space.

AbsoluteProof[®] prepares PDF or 1-8-bit TIFF files which contain all the necessary information for output on the remote device.

AbsoluteProof[®] offers an easily deployed solution that does not require costly technical installations and can be supported remotely from any Mac desktop.

Or, simply setup preconfigured "hot folders" on your desktop to drag and drop the files to the output device using standard IPP (Internet Printing Protocol).



Introducing the Intelligent Multicolor Engine[®]

How can AbsoluteProof produce true halftone 'press match standard' proofs from an ordinary inkjet? Easy, using advanced algorithms and filtering via the 'Intelligent Multicolor Engine'!

Digital workflows should save time and frustrations not add complexity and labor to the production environment. After years of field tested research with industry leading partners such as Pantone[®] and Gretag Macbeth[®], AbsoluteProof's core technology was engineered to simplify color matching and deliver the highest attainable press match quality from a range of common output devices.

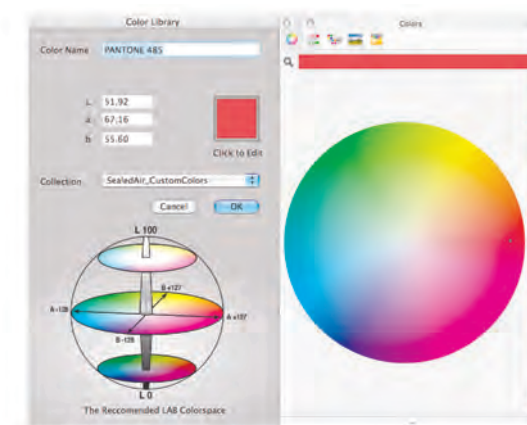
Extraordinary color that matches your press? Absolutely.

Inkjet printers today have a much broader range of color output capability (gamut) than any printing press. Their standard CMYK inks are more saturated but if properly color managed can reproduce a variety of ICC color standards and almost the entire PANTONE MATCHING SYSTEM[®] or spot colors.

The Intelligent Multicolor Engine[®], unlike other systems, controls and drives each individual inkjet with information supplied by separated RIP files to the specified output channels - CMYK, CMYKOG/Hexachrome[®], or CMYK + multiple spot colors - achieving amazing accurate 'press match' halftone proofs every time!

- ✓ Includes licensed PANTONE[®] digital color libraries (2004) for accurate spot color matching.
- ✓ Easily proof two-color duotone jobs matched to your press.
- ✓ Spot color tints can easily be proofed with amazing results
- ✓ Custom color controls allow users to define their own colors using CMYK or L*A*B data
- ✓ Accurately proof difficult color designs automatically such as color gradients, spot colors overprinting CMYK, etc.

AbsoluteProof is PANTONE Hexachrome[®] certified, achieving a worldwide industry first in July 2002 with the ability to enable true 'press match standard' ICC Hexachrome proofing for inkjet printers. Working closely with partners such as Epson[®] and Roland HiFi Jet to offer a cost-effective proofing alternative for HiFi/Multichannel/Special color workflows.



Color management server

AbsoluteProof acts as a centralized color management server automatically handling proper output and assignment of standard ICC profiles. Easy to use "hot folders" save time and expand uses.

- ✓ Drop camera raw or scans into hot folders for instant press match proofs
- ✓ Easily color match and manage files to various output types and multiple printers

Why choose AbsoluteProof?

Agencies

- ✓ Can deliver cost-effective contract quality proofing in-house for one or multiple locations
- ✓ Are able to better communicate color between design and final output vendors
- ✓ Can now implement and cost-justify improvements in digital workflow and overall color management

Prepress/Service Bureaus

- ✓ Easily integrates within existing digital workflows and helps to manage jobs to multiple proofing devices
- ✓ Provides an affordable and simple way to setup and manage accurate color proofing for multiple press/final output location vendors

Printers

- ✓ Enables printers to share press profiles and color data for faster proofing cycles with clients and service providers
- ✓ High-quality contract halftone digital inkjet proofs at significantly lower costs per proof
- ✓ Provides additional revenue opportunity for printers to easily offer clients POP, signage, and posters
- ✓ Offers a feasible, affordable solution to implement remote proofing to multiple client locations

If you want to learn more about AbsoluteProof, please contact us.

Worldwide Headquarters:

AbsoluteProof
Gimlé Ltd.
Suite 6, 75 Peterborough St
8013 Christchurch, New Zealand
Telephone +64-3-3535 640
<http://www.absolute-proof.com>

USA:

SmartStuff Graphics Distribution
Tel: 636-532-6131
155 Chesterfield Ind. Blvd.
Chesterfield, MO 63005
Fax: 636-532-0468

The AbsoluteProof range of products, comparison of Features

	PRO	2x	4x	8x
Supported printer format size	ALL	up to 17"	up to 24"	up to 44"
Drives Multiple Printers with one license	ALL	Individual upgrade	Individual upgrade	Individual upgrade
HiFi Proofing/Superior Pantone Matching/Extrachrome Ready	Standard	-	-	-
Halftone "Dot" proofing with 5 Levels of Halftone Smoothing Control	✓	✓	✓	✓
Backed up Proofing on Epson Printers	✓	✓	✓	✓
Proofs "ripped" Files from Image/Platesetter RIP	✓	✓	✓	✓
Accurately proof press issues (i.e. overprinting, trapping, duotones)	✓	✓	✓	✓
Drag & Drop Printing via "Hot Folders"	✓	✓	✓	✓
ICC ColorSync Support includes N-Color	✓	✓	✓	✓
Handles Multiple Input Sources (LAB /RGB/CMYK)	✓	✓	✓	✓
Remote Proofing without licensed software at the receiving end	✓	✓	✓	✓
Iterative Calibration Wizard	✓	✓	✓	✓
Press Match Dotgain Control for Individual Colors	✓	✓	✓	✓
Licensed Pantone Libraries	✓	✓	✓	✓
Editable L*a*b Spot Color Library	✓	✓	✓	✓
Supports Broad Range of PostScript Devices	✓	✓	✓	✓
True Multi-Color ICC Support N-Color up to 8 colors)	✓	✓	✓	✓
Intelligent Multicolor Engine®	✓	✓	✓	✓
Built-in Ink Optimization Controls	✓	✓	✓	✓
Unlimited Printer License (For Same Printer Model)	✓	✓	✓	✓

AbsoluteProof delivers sharp,
accurate halftone inkjet proofing
that predicts press output
with unrivalled dot quality
and color matching



AbsoluteProof

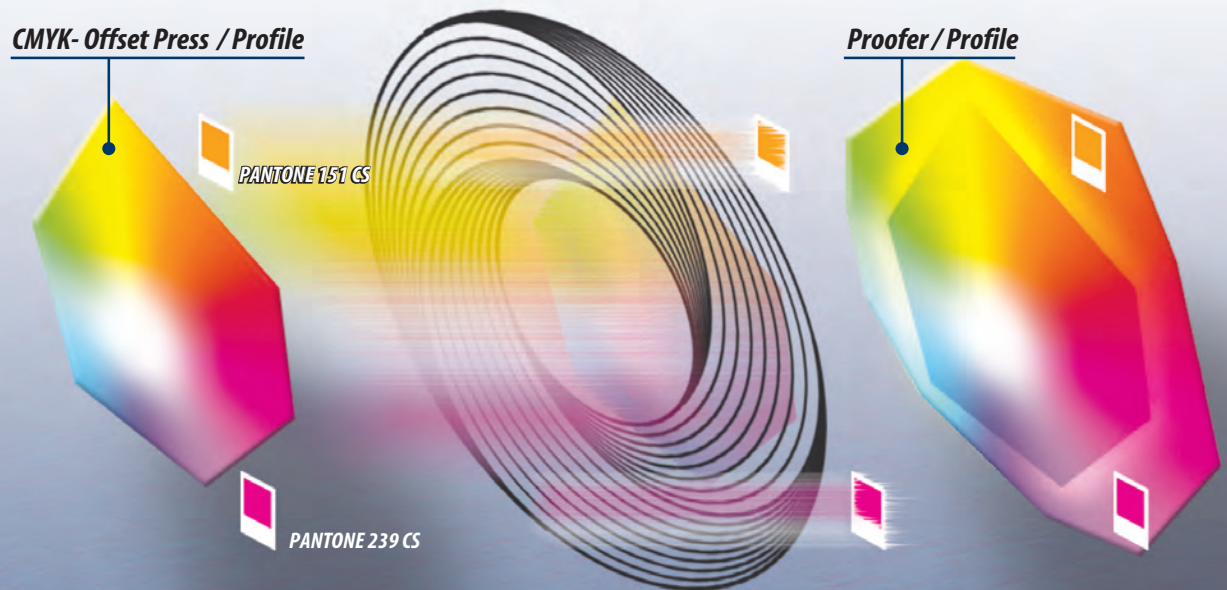
DIGITAL PROOFING RESOLVED

The Intelligent Multicolor Engine Optimizes ANY workflow

AbsoluteProof maximizes the color gamut of your printer for 'press match' proofs!

CMYK- Offset Press / Profile

Proofer / Profile



Example

CMYK + 2 matched PANTONE colors, colormanged & served to CMYK extended colorgamut proofer.



System Requirements

Minimum

- 1 Mac 2 GHz
- Mac OS X 10.4
- Ethernet/ 100baseT
- 1Gbyte free RAM
- 40Gbyte free disk space

Recommended

- Quad G5 Mac 2.7GHz
- Mac OS X 10.4 or later
- Ethernet / 1000baseT
- 2Gbyte free RAM or more
- Raid 5 - 20Gbyte free disk space



List of supported imagesetter, platesetter RIP platforms

- | | |
|--------------------------|-------------------------------|
| A.B. Dick-PrintersRIPm | KBKsuperRip |
| Autologic-APS GRAFIX RIP | RisaRip-70H |
| AkronRIP | SpeedSetter |
| BARCO-AutoPrep | Pearl Rip Purup-Eskofot |
| Creo-Allegro | PiRIP |
| DotBox, RoboRIP | Ryobi PS-RIP |
| Dainippon Screen-HQ-RIP | Scitex Brisque |
| Allegro | ScanView-RipMate |
| ECRM RIP | Heidelberg-Quickmaster DI RIP |
| FUJI-HQ RIP | Heidelberg-UltrERIP, |
| FUJI-Celebra | Heidelberg-QuickRIP |
| Graphics-Pro | Heidelberg Delta |
| ImageGate | TrueFlow |



EPSON



Roland

gretagmacbeth
YOUR COLOR. PRECISELY.

x-rite

List of compatible printers.

- | | | |
|-------------|------------------------------|--------------------------------------|
| Epson 4880 | Roland FJ42* | HP 10-20-50-120 |
| Epson 4800 | Roland FJ52* | HP D.Jet ColorPro |
| Epson 7880 | Roland FJ400* | HP D.Jet 1050C, 1055CM |
| Epson 7600 | Roland FJ500* | HP D.Jet 3000CP, 3500CP |
| Epson 7800 | Roland FJ600* | HP D.Jet 2000CP, 2500CP |
| Epson 9880 | Roland Pro II Series* | HP D.Jet 5000 - 5500 |
| Epson 9600 | *Hexachrome-capable printers | HP D.Jet 755CM, 750C Plus, 750C, 700 |
| Epson 9800 | | HP D.Jet 650C, 600 |
| Epson 10000 | | HP D.Jet 488CA, 455CA, 450C, 430 |
| Epson 10600 | | HP D.Jet 350C, 330 |
| | | HP D.Jet 250C, 230, 220, 200 |

Any Postscript printer.
Printers are constantly being added, check our website for updates.
www.absolute-proof.com

All rights reserved. AbsoluteProof is a registered Trademark of Gimlé Ltd.
Harlequin and ScriptWorks are trademarks of Harlequin Limited. ColorSync is trademark of Apple Computer. PostScript is trademark of Adobe Systems.
Pantone and Hexachrome are registered trademarks of Pantone Inc. Other product and company names mentioned herein are trademarks or registered trademarks of their respective owners. Product specifications are subject to change without notice.

gimlé
MANUFACTURED BY GIMLE